



GRAHAM100

THE 100TH ANNIVERSARY OF THE MARTHA GRAHAM DANCE COMPANY



Photo by @liged. Photo. Graphic design by Yvette Makonnen.

JANUARY 28, 2025
PIONEER CENTER
RENO, NV

Sponsored by



artown.org

Artown's presentation of
the Martha Graham Dance Company
is exclusively sponsored by
the E. L. Wiegand Foundation.



GRAHAM100

THE 100TH ANNIVERSARY OF THE MARTHA GRAHAM DANCE COMPANY

Artistic Director

Janet Eilber

Executive Director

LaRue Allen

THE COMPANY

Lloyd Knight • Xin Ying • Leslie Andrea Williams
Anne Souder • Laurel Dalley Smith • So Young An
Richard Villaverde • Devin Loh • Antonio Leone
Meagan King • Ane Arrieta • Zachary Jeppsen-Toy
Amanda Moreira • Jai Perez • Ethan Palma

Major support for the Martha Graham Dance Company is provided by:

Arnhold Foundation

Howard Gilman Foundation

New York City Department of Cultural Affairs In partnership
with the New York City Council

New York State Council on the Arts with the support of the New York
State Legislature

National Endowment for the Arts

The Shubert Foundation

The Artists employed in this production are members of the American
Guild of Musical Artists AFL-CIO.

In the tradition of its founder, the Martha Graham Center of Contemporary Dance remains committed to being a diverse, equitable, inclusive, and anti-racist organization, and will honor this pledge through its ongoing practices, policies and behaviors.

Copyright to all Martha Graham dances presented held by the Martha
Graham Center of Contemporary Dance, Inc.
All rights reserved.



———— PANORAMA ————

Theme of Dedication – Imperial Theme – Popular Theme

Choreography and Costumes by Martha Graham
Music by Norman Lloyd[†]
Lighting by David Finley

Premiere: August 14, 1935, Vermont State Armory,
Bennington, VT

Regisseur: Elizabeth Auclair

Performed by the dancers from the Department of Theatre and
Dance at the University of Nevada, Reno.

Dancers: Leslie Balzer • Rose Barber-Callicrate • Noah Boston,
Lili Brost • Brooklyn Carris • Julia Dennis • Tyler Dorning •
Nina Drobushv • Matthew Fish • Jenna Fortino • Katarina
Hallerbach • Jadee Higgins • Juliette Hughes • Demiah Hunt •
Ryan Jahnson • Alyssa Kleszyk • Kenzie Marks • Anthony
McMenamy • Zoe McCracken • Frankie Melander •
Tiffanie Moreno • Andrew Paiz • Alexa Patton • Juliana Patton
• Michelle Salem • Sky Warner.

Understudies: Ruth Ross • Kimberly Yukes.

Rehearsal: Eve Allen Garza.

Original reconstruction in 1992 by Yuriko, from the Julien Bryan film.

[†]Arranged and orchestrated by Stanley Sussman.



Photo of Anne Souder in Martha Graham's *Immediate Tragedy* by Melissa Sherwood.

———— IMMEDIATE TRAGEDY ————
Dance of Dedication

Choreography by Martha Graham reimagined by Janet Eilber

Costume by Martha Graham

Original Music by Henry Cowell

Music for reimagined *Immediate Tragedy* by Christopher Rountree[†]

Music performed by Richard Valitutto, piano

Lighting by Yi-Chung Chen

Danceturgy for reimagining by Neil Baldwin

Premiere: July 30, 1937, Bennington, VT

I was upright and determined to stay upright at all costs.

– Martha Graham

Performed by So Young An

Significant commissioning support provided by The O'Donnell-Green Music and Dance Foundation.

[†]Music produced and mixed by Lewis Pesacov



Leslie Andrea Williams in Jamar Roberts's *We the People*; photo by Isabella Pagano.

———— WE THE PEOPLE ————

Choreography by Jamar Roberts
Music by Rhiannon Giddens
Arranged by Gabe Witcher
Costume Design by Karen Young
Lighting Design by Yi-Chung Chen

So Young An • Ane Arrieta • Zachary Jeppsen-Toy
Laurel Dalley Smith • Meagan King • Lloyd Knight
Jai Perez • Anne Souder • Richard Villaverde
Leslie Andrea Williams

We the People was made possible with a significant commissioning grant from The O'Donnell-Green Music and Dance Foundation.

Production support was provided by University of Michigan.

Intermission



So Young An and Antonio Leone in Martha Graham's *Errand into the Maze*;
photos by Scott Serio for Eclipse Sportswire

———— ERRAND INTO THE MAZE ————

Choreography by Martha Graham

Music by Gian Carlo Menotti†

Lighting by Lauren Libretti

Costumes by Maria Garcia

Premiere: February 28, 1947, Ziegfeld Theatre, New York City

There is an errand into the maze of the heart's darkness in order to face and do battle with the Creature of Fear. There is the accomplishment of the errand, the instant of triumph, and the emergence from the dark.

Xin Ying • Ethan Palma

†Used by arrangement with G. Schirmer, Inc., publisher and copyright owner.



Cave. Martha Graham Dance Company in new work by Hofesh Shechter, co-produced by Studio Simkin.
Photo by Chris Jones.

———— CAVE ————

Choreography by Hofesh Shechter
Creative Producer Daniil Simkin
Music by Âme† and Hofesh Shechter
Costumes by Caleb Krieg
Lighting by Yi-Chung Chen
Choreography Assistant Kim Kohlmann

World Premiere: April 6th, 2022, New York City Center

Ane Arrieta • Laurel Dalley Smith • Meagan King
Lloyd Knight • Antonio Leone • Devin Loh
Amanda Moreira • Jai Perez • Anne Souder
Richard Villaverde • Leslie Andrea Williams

CAVE was made possible with a significant commissioning grant from The O'Donnell-Green Music and Dance Foundation.

Major support for CAVE was provided by Sharon Patrick, the Clayton-Royer Family Fund, Monica Voldstad and Jeff & Susan Campbell and Barbara Goldstein.

Production support was provided by Vassar College.

Co-Producing support provided by Studio Simkin and Sharing Spaces.

†Samples of „Fiori” by Âme; Sample of “The Witness” by Âme & Karyyn. Frank Wiedemann and Kristian Beyer are members of the German collecting society GEMA and published by Innervisions GmbH.

NOTES ON THE REPERTORY



PANORAMA (1935)

Premiered in 1935, at the famed summer retreat in Bennington, Vermont, *Panorama* was considered to be experimental. It was 45 minutes long and used an “avant-garde” score by Norman Lloyd. The dance also featured 33 student dancers and evoked the power of the people to make change. *Panorama* was lost until 1992, when the sections of it performed tonight were discovered in an early film.

IMMEDIATE TRAGEDY

Martha Graham created this solo in 1937 in reaction to the atrocities of the Spanish Civil War. We see the woman in *Immediate Tragedy* as a universal figure of determination and finally, resilience. The dance was notable and well received, but when Graham stopped performing it in the late 1930s, the solo was forgotten and considered lost. In 2020, Janet Eilber reimaged the choreography for *Immediate Tragedy* using recently discovered photos of Graham in a 1937 performance, and many other archival references. A new score was created by Christopher Rountree inspired by pages of music hand-written by composer Henry Cowell, which were found in the Graham archives. Martha described her inspiration for this dance in a letter to Cowell, *...whether the desperation lies in Spain or in a memory in our own hearts, it is the same. I felt in that dance I was dedicating myself anew to space, that in spite of violation I was upright and that I was going to stay upright at all costs...*

WE THE PEOPLE (2024)

Premiered in February 2024, this dance of 21st Century Americana references and reverberates with our history. Its new score by Rhiannon Giddens, as arranged by Gabe Witcher, offers the historic sound of American folk music. While the choreography by Jamar Roberts is very much of today and in counterpoint to the music. The choreographer has said, “*We the People* is equal parts protest and lament, speculating on the ways in which America does not always live up to its promise. Against the backdrop of traditional American music, *We the People* hopes to serve as a reminder that the power for collective change belongs to the people.”



ERRAND INTO THE MAZE (1947)

Errand into the Maze premiered in 1947 with a score by Gian Carlo Menotti, set design by Isamu Noguchi and starring Martha Graham. The duet is loosely derived from the myth of Theseus, who journeys into the labyrinth to confront the Minotaur, a creature who is half man and half beast. In Martha Graham's retelling of the tale, it is a woman who descends into the maze to confront the Creature of Fear. The duet can be interpreted as a metaphor for the psychological journey of a woman who must face her own fears. The current production of *Errand into the Maze* is stripped of the classic production elements, in order to focus on the dramatic, physical journey of the choreography itself.

CAVE

This high-energy work by Hofesh Shechter emerged out of an idea brought to the Graham Company by the international dance star Daniil Simkin. Daniil was interested in taking the dance that is part of the techno club scene to a new level and finding a way to integrate choreographed movement into a Rave style event. As a prelude to this larger idea, Hofesh Shechter was invited to create a dance for the proscenium stage for the Graham dancers. The result is a visceral collective movement experience, with a powerful, swirling shared kinetic energy.

ABOUT MARTHA GRAHAM

Martha Graham has had a deep and lasting impact on American art and culture. She single-handedly defined contemporary dance as a uniquely American art form, which the nation has in turn shared with the world. Crossing artistic boundaries, she collaborated with and commissioned work from the leading visual artists, musicians, and designers of her day, including sculptor Isamu Noguchi and composers Aaron Copland, Samuel Barber, and Gian Carlo Menotti.

Graham's groundbreaking style grew from her experimentation with the elemental movements of contraction and release. By focusing on the basic activities of the human form, she enlivened the body with raw, electric emotion. The sharp, angular, and direct movements of her technique were a dramatic departure from the predominant style of the time.

Graham influenced generations of choreographers that included Merce Cunningham, Paul Taylor, and Twyla Tharp, altering the scope of dance. Classical ballet dancers Margot Fonteyn, Rudolf Nureyev, and Mikhail Baryshnikov sought her out to broaden their artistry. Artists of all genres were eager to study and work with Graham—she taught actors including Bette Davis, Kirk Douglas, Madonna, Liza Minnelli, Gregory Peck, Tony Randall, Eli Wallach, Anne Jackson, and Joanne Woodward to utilize their bodies as expressive instruments.

During her long and illustrious career, Graham created 181 dance compositions. During the Bicentennial she was granted the United States' highest civilian honor, The Medal of Freedom. In 1998, TIME Magazine named her the "Dancer of the Century." The first dancer to perform at the White House and to act as a cultural ambassador abroad, she captured the spirit of a nation. "No artist is ahead of his time," she said. "He is his time. It is just that the others are behind the time."



Photo of Martha Graham in *Immediate Tragedy* courtesy of Martha Graham Resources

ABOUT THE COMPANY

The Martha Graham Dance Company has been a leader in the evolving art form of modern dance since its founding in 1926. It is both the oldest dance company in the United States and the oldest integrated dance company.

Today, the Company is embracing a new programming vision that showcases masterpieces by Graham alongside newly commissioned works by contemporary artists. With programs that unite the work of choreographers across time within a rich historical and thematic narrative, the Company is actively working to create new platforms for contemporary dance and multiple points of access for audiences.

Since its inception, the Martha Graham Dance Company has received international acclaim from audiences in more than 50 countries throughout North and South America, Europe, Africa, Asia, and the Middle East. The Company has performed at the Metropolitan Opera House, Carnegie Hall, the Paris Opera House, Covent Garden, and the John F. Kennedy Center for the Performing Arts, as well as at the base of the Great Pyramids in Egypt and in the ancient Odeon of Herodes Atticus theater on the Acropolis in Athens. In addition, the Company has also produced several award-winning films broadcast on PBS and around the world.

Though Martha Graham herself is the best-known alumna of her company, the Company has provided a training ground for some of modern dance's most celebrated performers and choreographers. Former members of the Company include Merce Cunningham, Erick Hawkins, Paul Taylor, John Butler and Glen Tetley. Among celebrities who have joined the Company in performance are Mikhail Baryshnikov, Margot Fonteyn, Rudolf Nureyev, Maya Plisetskaya, Tiler Peck, Misty Copeland, Herman Cornejo and Aurelie Dupont.

In recent years, the Company has challenged expectations and experimented with a wide range of offerings beyond its mainstage performances. It has created a series of intimate in-studio events, forged unusual creative partnerships with the likes of SITI Company, Performa, the New Museum, Barney's, and Siracusa's Greek Theater Festival (to name a few); created substantial digital offerings with Google Arts and Culture, YouTube, and Cennarium; and created a model for reaching new audiences through social media. The astonishing list of artists who have created works for the Graham dancers in the last decade reads like a catalog of must-see choreographers:

Kyle Abraham, Aszure Barton, Sidi Larbi Cherkaoui, Lucinda Childs, Marie Chouinard, Michelle Dorrance, Nacho Duato, Mats Ek, Andonis Foniadakis, Liz Gerring, Larry Keigwin, Michael Kliën, Pontus Lidberg, Lil Buck, Lar Lubovitch, Josie Moseley, Richard Move, Bulareyaung Pagarlava, Annie-B Parson, Yvonne Rainer, Sonya Tayeh, Doug Varone, Luca Vegetti, Gwen Welliver and Robert Wilson.

The current company dancers hail from around the world and, while grounded in their Graham core training, can also slip into the style of contemporary choreographers like a second skin, bringing technical brilliance and artistic nuance to all they do -- from brand new works to Graham classics and those from early pioneers such as Isadora Duncan, Jane Dudley, Anna Sokolow, and Mary Wigman. “Some of the most skilled and powerful dancers you can ever hope to see,” according to the Washington Post last year. “One of the great companies of the world,” says The New York Times, while Los Angeles Times notes, “They seem able to do anything, and to make it look easy as well as poetic.”

BIOGRAPHIES



JANET EILBER (*Artistic Director*) has been the Company’s artistic director since 2005. Her direction has focused on creating new forms of audience access to Martha Graham’s masterworks. These initiatives include contextual programming, educational and community partnerships, use of new media, commissions from today’s top choreographers and creative events such as the *Lamentation Variations*. Earlier in her career, as a principal dancer with the Company, Ms. Eilber worked closely with Martha Graham. She danced many of Graham’s greatest roles, had roles created for her by Graham, and was directed by Graham in most of the major roles of the repertory. She soloed at the White House, was partnered by Rudolf Nureyev, starred in three segments of *Dance in America*, and has since taught, lectured, and directed Graham ballets internationally. Apart from her work with Graham, Ms. Eilber has performed in films, on television, and on Broadway directed by such greats as Agnes deMille and Bob Fosse and has received four Lester Horton Awards for her reconstruction and performance of seminal American modern dance. She has served as Director of Arts Education for the Dana Foundation, guiding the Foundation’s support for Teaching Artist training and contributing regularly to its arts education publications. Ms. Eilber is a Trustee Emeritus of the Interlochen Center for the Arts. She is married to screenwriter/director John Warren, with whom she has two daughters, Madeline and Eva.



BEN SCHULTZ (*Rehearsal Director*) joined the Company in 2009 and serves as rehearsal director for the company. He’s danced lead roles including King Hades in *Clytemnestra*, Jason in *Cave of the Heart*, and Shaman in *The Rite Of Spring*. He premiered Martha Graham’s work in Russia performing *Errand into the Maze* with prima ballerina Diana Vishneva at the Mariinsky Theatre, Saint Petersburg. He’s also performed with Buglisi Dance Theater, Hannah Kahn Dance Company, and The Cleo Parker Robinson Dance Ensemble. Currently he’s on staff at both The Martha Graham School and The Alvin Ailey School teaching the Martha Graham technique for pre professional students and divisions.



LLOYD KNIGHT joined the Company in 2005 and performs the major male roles of the Graham repertory including in *Appalachian Spring*, *Embattled Garden*, *Night Journey* and many others. *Dance Magazine* named him one of the “Top 25 Dancers to Watch” in 2010 and one of the best performers of 2015. Mr. Knight has started with ballet greats Wendy Whelan and Misty Copeland in signature Graham duets and has had roles created for him by such renowned artists as Nacho Duato and Pam Tanowitz.

He is currently a principal guest artist for The Royal Ballet of Flanders directed by Sidi Larbi Cherkaoui. Born in England and raised in Miami, he trained at Miami Conservatory of Ballet and New World School of the Arts.

XIN YING joined the Company in 2011, *Dance Magazine* cover star. She performs The Chosen One in *Rite of Spring*, Graham’s own roles including in *Herodiade*, *Errand into the Maze*, *Chronicle* and *Cave of the Heart*. She has been featured in works created for the Company by Pontus Lidberg, Annie-B Parson, Hofesh Shechter, Kyle Abraham, Maxine Doyle and Bobbi Jene Smith. She is also a choreographer and currently getting her MFA at NYU Tisch.



LESLIE ANDREA WILLIAMS grew up in Raleigh, North Carolina. Ms. Williams performs numerous featured roles in iconic Graham ballets. Some of her most notable roles have been dancing the solo *Deep Song*, and performing as the lead in *Chronicle*. Her performance in *Chronicle* earned her a naming in the New York Times “Best Dance of 2019” list. Ms. Williams’s has also been profiled in *Dance Magazine*, *Teen Vogue*, *Phycology Today*, and *Marie Claire Taiwan*. Her work has been described in reviews as “hypnotic” and “larger than life.” Ms. Williams is a graduate of the Julliard School.



ANNE SOUDER joined the Company in 2015 and performs Martha Graham’s own roles in *Dark Meadow Suite*, *Chronicle*, *Deep Song*, and *Ekstasis*. Roles have also been created for her by such luminaries as Marie Chouinard, Sidi Larbi Cherkaoui, Maxine Doyle and Bobbi Jene Smith. Ms. Souder began her training in Maryville, Tennessee and graduated from the Ailey/Fordham BFA program with a double major in Dance and Theology while performing works by Alvin Ailey, Ron K. Brown, and more. She was also a member of Graham 2 and awarded a Dizzy Feet Foundation scholarship.





LAUREL DALLEY SMITH joined the Company in 2015. Performing principal roles in *Appalachian Spring*, *Steps in the Street*, *Errand into the Maze*, *Cave of the Heart* and *Diversion of Angels*. Also Creating new roles with contemporary choreographers Hofesh Schechter, Pam Tanowitz, Bobbi Jene Smith, Annie B Parsons amongst others. Laurel guests internationally with award winning LA/UK based Yorke Dance Project, performing work created on her by Yolande Yorke Edgell and Sir

Robert Cohan. Laurel recently created the role of Ariadne in Deborah Warner’s World premiere of ‘Minotaur’, choreography by Kim Brandstrup.



SO YOUNG AN, a native of South Korea, joined the Company in 2016 and dances featured roles in Graham ballets as well as new works. Ms. An is the recipient of the International Arts Award and the Grand Prize at the Korea National Ballet Grand Prix. She has danced with Korean National Ballet Company, Seoul Performing Arts Company and Buglisi Dance Theatre. She has also performed works by Yuri Grigorovich, Jean-Christophe Maillot, Mats

Ek, Patricia Ruanne and Samantha Dunster.

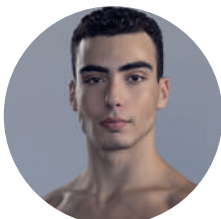


RICHARD VILLAVERDE born and raised in Miami, FL, began dancing at the age of 13, privately coached by Maria Eugenia Lorenzo. Mr. Villaverde is a New World School of the Arts graduate and received his B.F.A from University of the Arts in Philadelphia, PA. Notably, he was a part of *Arsenale della Danza 2012* at La Biennale de Venezia under the direction of Ismael Ivo. He later joined BalletX (2012-2021) where he was featured in works by

Matthew Neenan, Dwight Rodan, Nicolo Fonte, Penny Saunders, Cayetano Soto, Trey McIntyre, Jodie Gates, and Annabelle Lopez Ochoa. He performed at the Vail International Dance Festival, Ballet Sun Valley, Belgrade Dance Festival as well as at Jacob’s Pillow.



DEVIN LOH from Fanwood, NJ, joined the company in 2021. She has performed Graham classics such as *Appalachian Spring* and *Chronicle*, and contemporary works by Jamar Roberts, Hofesh Schechter, and others. Ms. Loh holds a BFA from SUNY Purchase and is a recipient of the Bert Terborgh Dance Award. Ms. Loh was a member of Graham 2.



ANTONIO LEONE a native of Italy, graduated from the Rudra Bejart School in Switzerland. In 2021 he joined Graham 2 and the main company in 2022. He performs featured roles in *Errand into the Maze* and *Diversion of Angels* by Martha Graham, as well as roles in commissioned works by Agnes DeMille, Sonya Tayeh and Yin Yue. He is the first male dancer with CRDance and a Pearl Lang Award recipient for Excellence in Performance”.



MEAGAN KING of Brooklyn, NY, is an Ailey/Fordham BFA graduate and LaGuardia H.S. alumna. Ms. King danced with Ailey II, receiving features in *Dance Spirit*, *The TODAY Show*, PIX11, *NY12*, *Good Day Sacramento*, and named BLOCH Young Artist. She performed at Holland Dance Festival and Jacob's Pillow Contemporary and choreographed for *Women/Create!* This is her second season with the company.



ANE ARRIETA (*New Dancer*), dual citizen of Spain and the U.S., grew up in Rhode Island and trained at the Newport Academy of Ballet. She received a BFA in Dance Performance and Pedagogy from the Hart School at the University of Hartford, earning the Outstanding Senior Award. She has worked with choreographers Jacquelyn Buglisi, Pascal Rioult, Bryan Arias, Francesca Harper and Colin Connor, and has been a member of Newport Contemporary Ballet, Buglisi Dance Theater and Graham 2. This is her second season with the company.



ZACHARY JEPPESEN-TOY (*New Dancer*) raised in Southern Wisconsin, is an alumnus of The Juilliard School where he received his BFA in Dance. He has had the pleasure of performing pieces by Alvin Ailey, Martha Graham, Jacquelyn Buglisi, Donald McKayle, Paul Taylor, Ohad Naharin, and many other choreographers. Before Juilliard, Zachary attended The Chicago Academy for the Arts where he studied under Randy Duncan and Patrick Simoniello. This is his second season with the company.



AMANDA MOREIRA (*New Dancer*), originally from Roxbury, NJ, received her BFA in Dance with a concentration in Modern from Marymount Manhattan College in 2022. She has performed works choreographed by Martha Graham, Twyla Tharp, Sidra Bell, Jessica Lang and Jennifer Archibald. After graduating she joined Graham 2. This is her second season with the company.



JAI PEREZ (*New Dancer*), from Brooklyn, NY, started his dance journey at the National Dance Institute where he cultivated a love for dance. He continued his training at the Alvin Ailey Junior Division, and is now an Alumni of the Conservatory of Dance at SUNY Purchase. He has performed works by Ronald K. Brown, Doug Varone, Ja'Malik, Ayodele Casel, Norbert De La Cruz III, Martha Graham and Jacquelyn Buglisi. This is his second season with the company.



ETHAN PALMA (*Apprentice*) is originally from Appleton, Wisconsin where he began his training at Barb's Centre for Dance. Ethan graduated from Marymount Manhattan College with a Bachelor's in Fine Arts with a concentration in ballet. At Marymount, Ethan has performed in works of many choreographers including Martha Graham, Sidra Bell, Jenn Freeman, Chanel Dasilva, Pedro Ruiz, and Darshan Bhuller. This is Ethan's first season with the Martha Graham Dance Company.

STAFF

LaRue Allen, *Executive Director*

Janet Eilber, *Artistic Director*

Ben Schultz, *Rehearsal Director*

Blakeley White-McGuire, *Rehearsal Director*

Simona Ferrara, *General Manager*

Lauren Mosier, *Company Manager*

A. Apostol, *Director of Development Operations*

Fran Kirmser, *Director of Strategic Partnerships and Special Events*

Melissa Sherwood, *Director of Marketing*

Joyce Herring, *Director of Martha Graham Resources*

Chloe Morrell, *Production Supervisor*

Yi-Chung Chen, *Resident Lighting Designer*

Becky Nussbaum, *Associate Lighting Supervisor*

Gabrielle Corrigan, *Wardrobe Supervisor*

Karen Young, *Costume Consultant*

Ashley Brown, *Director of School*

Tami Alesson, *Dean of Students and Government Affairs*

Virginie Mécène, *Program Director/Director of Graham 2*

Lone Larsen, *Program Director*

Amélie Bénard, *Teens@Graham Program Director*

Ana Sanchez, *School Assistant*

Janet Stapleton, *Press Agent*

REGISSEURS

Miki Orihara

Virginie Mecene

Peggy Lyman

Peter Sparling

Blakeley White-McGuire

Elizabeth Auclair

Lone Larsen

Tadej Brdnik

Masha Maddux

Maxine Sherman

Martin Lofnes

Anne Souder

PeiJu Chien Pott

Amelie Bernard

BOARD OF TRUSTEES

Javier Morgado, *Chair*
Lorraine Oler, *Immediate Past Chair*
Barbara Cohen, *Vice Chair*
Inger Witter, *President*
Judith G. Schlosser, *Chair Emeritus*
LaRue Allen, *Executive Director*
Janet Eilber, *Artistic Director*
Amy Blumenthal
Geoffrey D. Fallon
Christine Jowers
Nichole Perkins
Dr. M. Felicity Rogers-Chapman
Stephen M. Rooks
Lori Sackler
Lawrence Stein
Ellen Stiene
Ellis Wood

NORTH AMERICAN REPRESENTATION

Rena Shagan Associates, Inc.
(www.shaganarts.com)

INTERNATIONAL REPRESENTATION

LaRue Allen
Executive Director
(lallen@marthagraham.org)

ALUMNI SEARCH

If you or someone you know has ever performed with the Martha Graham Dance Company or attended classes at the Martha Graham School, please send us names, addresses, telephone numbers and approximate dates of membership. We will add you to our alumni mailing list and keep you apprised of alumni events and benefits. Call +1.212.229.9200 or e-mail info@marthagraham.org.

The Martha Graham Center of Contemporary Dance is a not-for-profit corporation, supported by contributions from individuals, corporations, foundations, and government agencies. Contributions in support of the Martha Graham Center will be gratefully received at the Martha Graham Center of Contemporary Dance, Inc., 55 Bethune Street New York, NY 10014, or visit www.marthagraham.org/contribute.

For more information, visit www.marthagraham.org